

Great Lakes Fishery Commission  
Lake Michigan Committee  
Lake Committee Meetings  
March 23-27, 2026  
Ypsilanti, Michigan

## Harvest of Fishes from Lake Michigan during 2025



Prepared by:

Rebecca Redman and Will Stacy-Duffy  
Illinois Department of Natural Resources  
Lake Michigan Program  
9511 W. Harrison Street  
Des Plaines, IL 60016

Contributors:

Dave L. Menard II  
CORA  
Sault Ste. Marie, MI

Ben Dickinson  
Indiana DNR  
Michigan City, IN

Logan Sikora  
Wisconsin DNR  
Sturgeon Bay, WI

Patricia Dieter  
USGS  
Ann Arbor, MI

Patrick Hanchin  
Michigan DNR  
Charlevoix, MI

Sarah Patel  
USFWS  
Green Bay, WI



\*Caution should be used comparing 2020 harvest estimates to those from other years due to gaps in the collection of data caused by pandemic related restrictions.

## **LIST OF FIGURES ASSOCIATED WITH LAKEWIDE HARVEST**

**Figure 1a.** Total Harvest of Fish by Method from Lake Michigan, 1985-2025.

**Figure 1b.** Total Harvest of Fish by Method from Lake Michigan during last 20 years (2006-2025).

**Figure 2.** Harvest of Benthivore Fishes from Lake Michigan, 1985-2025.

**Figure 3a.** Harvest of Salmonine Fishes from Lake Michigan (Sport, Commercial, Assessment, and Weir), 1985-2025.

**Figure 3b.** Harvest of Salmonine Fishes from Lake Michigan (Sport, Commercial, Assessment, and Weir) during last 20 years, 2006-2025.

**Figure 4a.** Harvest of Inshore Fishes from Lake Michigan, 1985-2025.

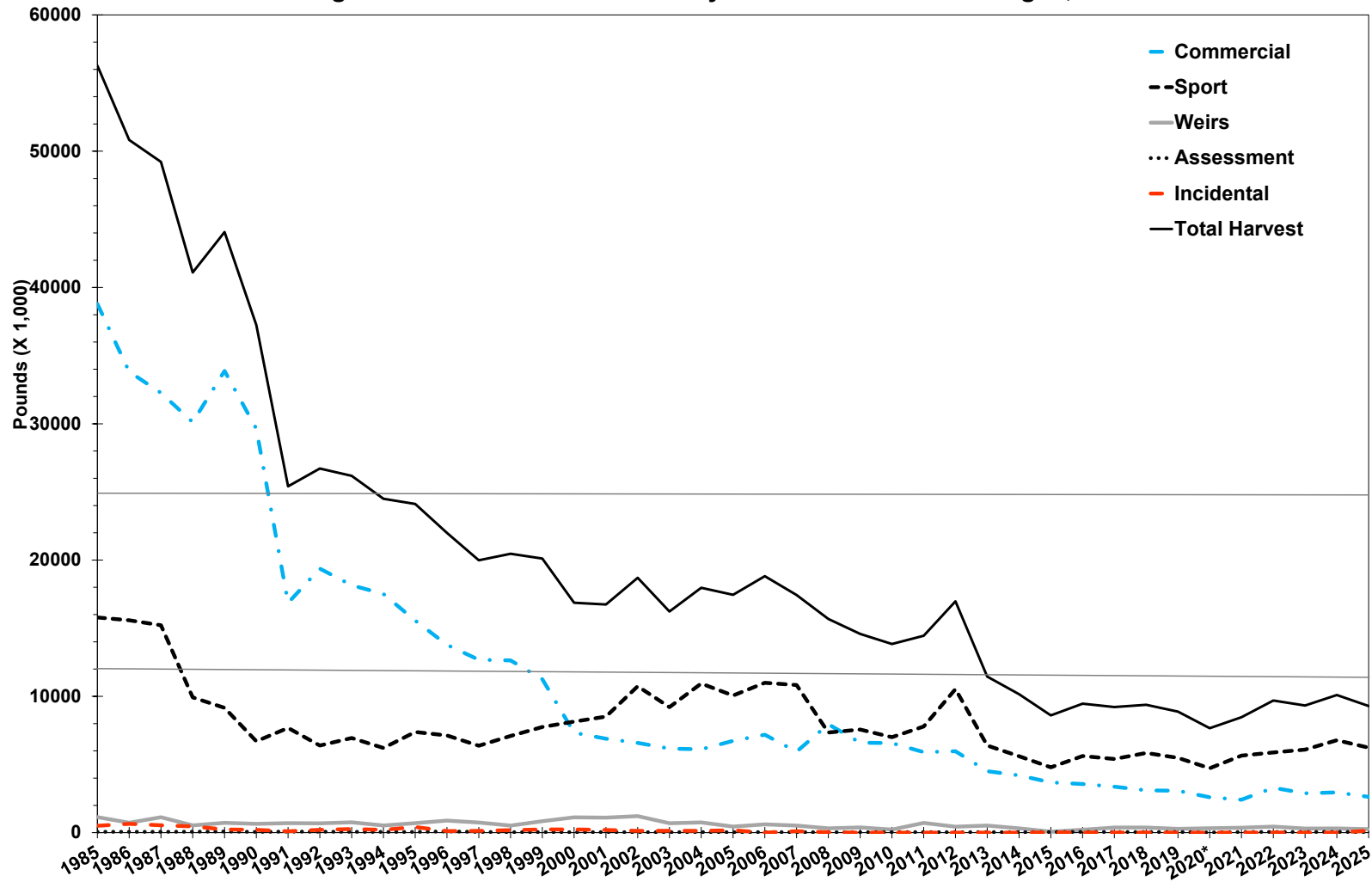
**Figure 4b.** Harvest of Inshore Fishes from Lake Michigan during last 20 years (2006-2025).

**Figure 5a.** Harvest of Select Commercially Valuable Fish Species from Lake Michigan, 1985-2025.

**Figure 5b.** Harvest of Select Commercially Valuable Fish Species from Lake Michigan during last 20 years (2006-2025).

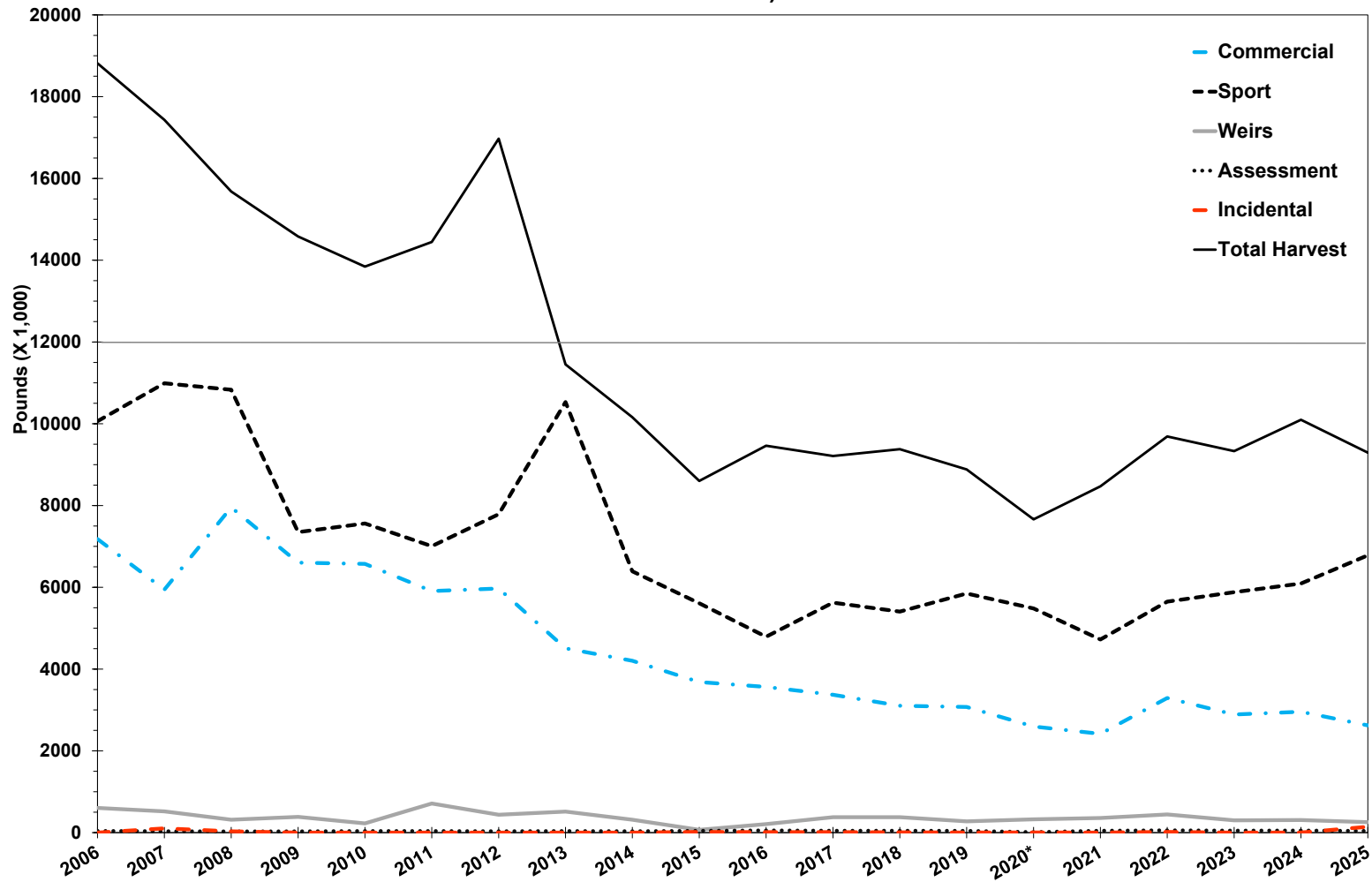
*Acknowledgements: Thanks to all the agency, university and tribal staff that collect, manage, and summarize the many sources of data included herein; this report would not be possible without their hard work and partnership.*

**Figure 1a. Total Harvest of Fish by Method from Lake Michigan, 1985-2025**



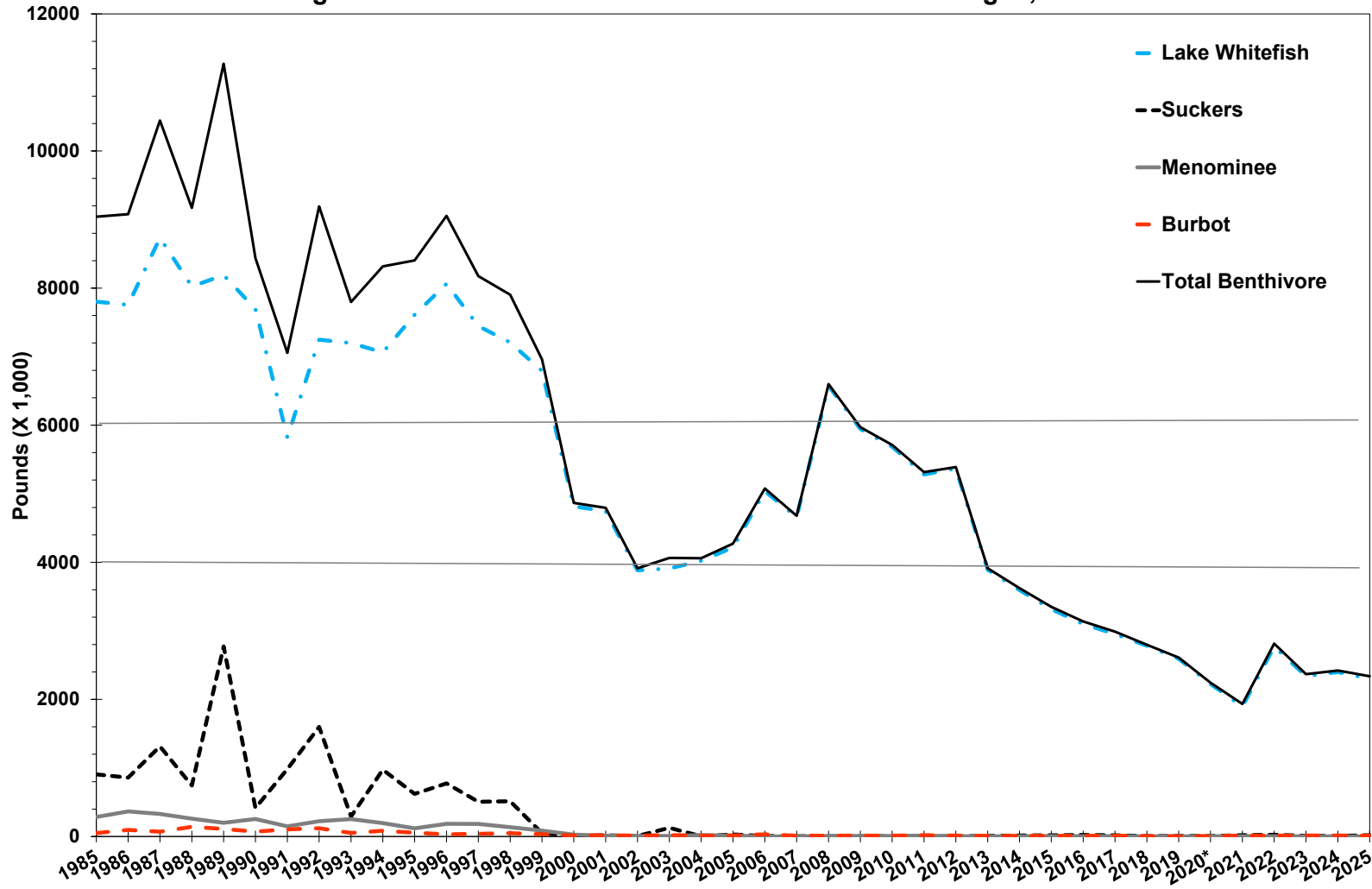
**Figure 1a.** Annual harvest of fish by method from Lake Michigan during 1985-2025. Gray horizontal lines indicate the target range for combined annual harvest of lake whitefish, salmonines, and yellow perch (12 to 25 million lbs) based on that stated in each respective Fish Community Objective.

**Figure 1b. Total Harvest of Fish by Method from Lake Michigan during last 20 years (2006-2025)**



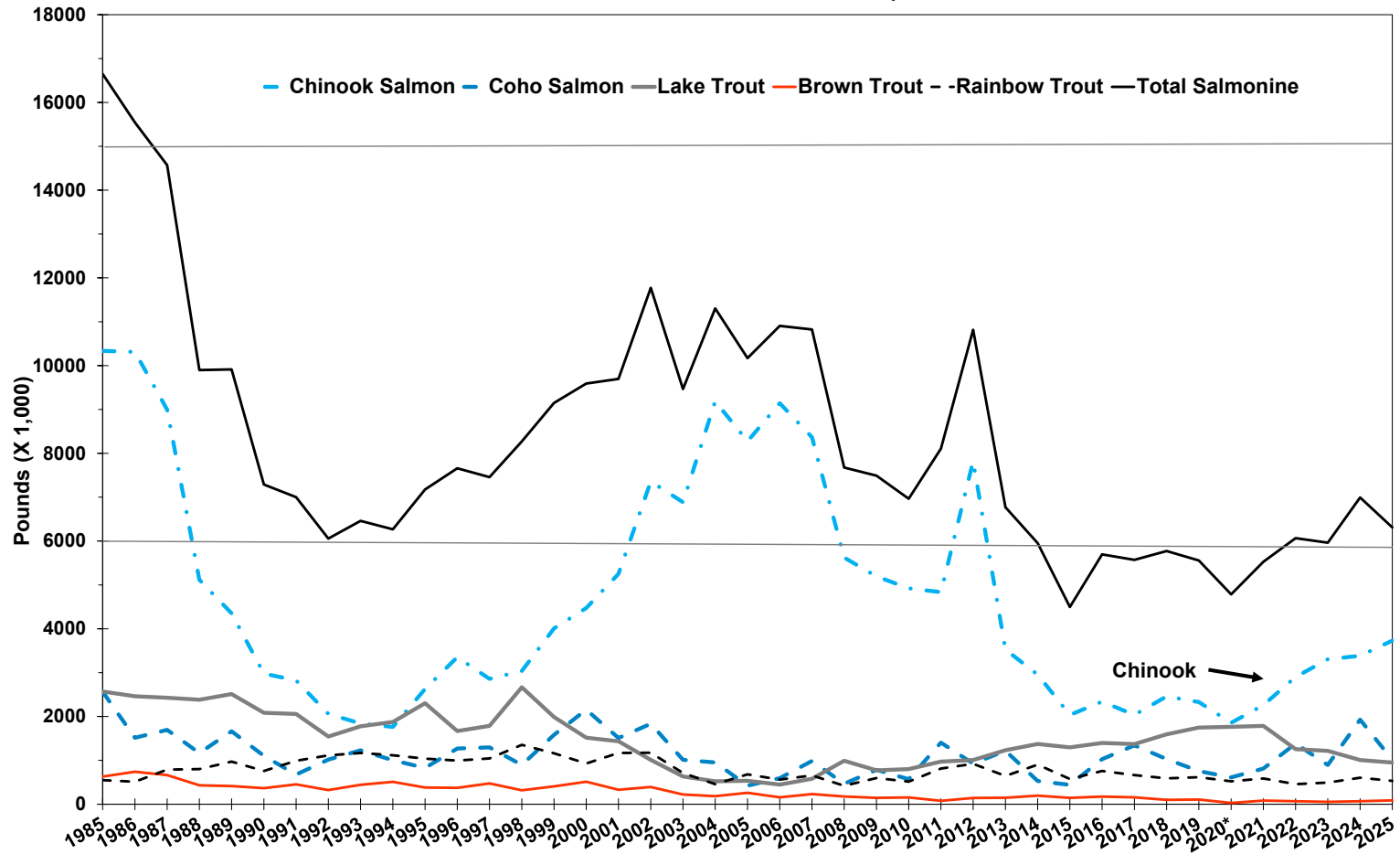
**Figure 1b.** This chart highlights annual harvest of fish by method during the last 20 years (2006-2025) from Lake Michigan and is a subset of the data presented in Fig 1a; note associated change in scale. Gray horizontal line indicates the lower annual harvest target (12 million lbs).

**Figure 2. Harvest of Benthivore Fishes from Lake Michigan, 1985-2025**

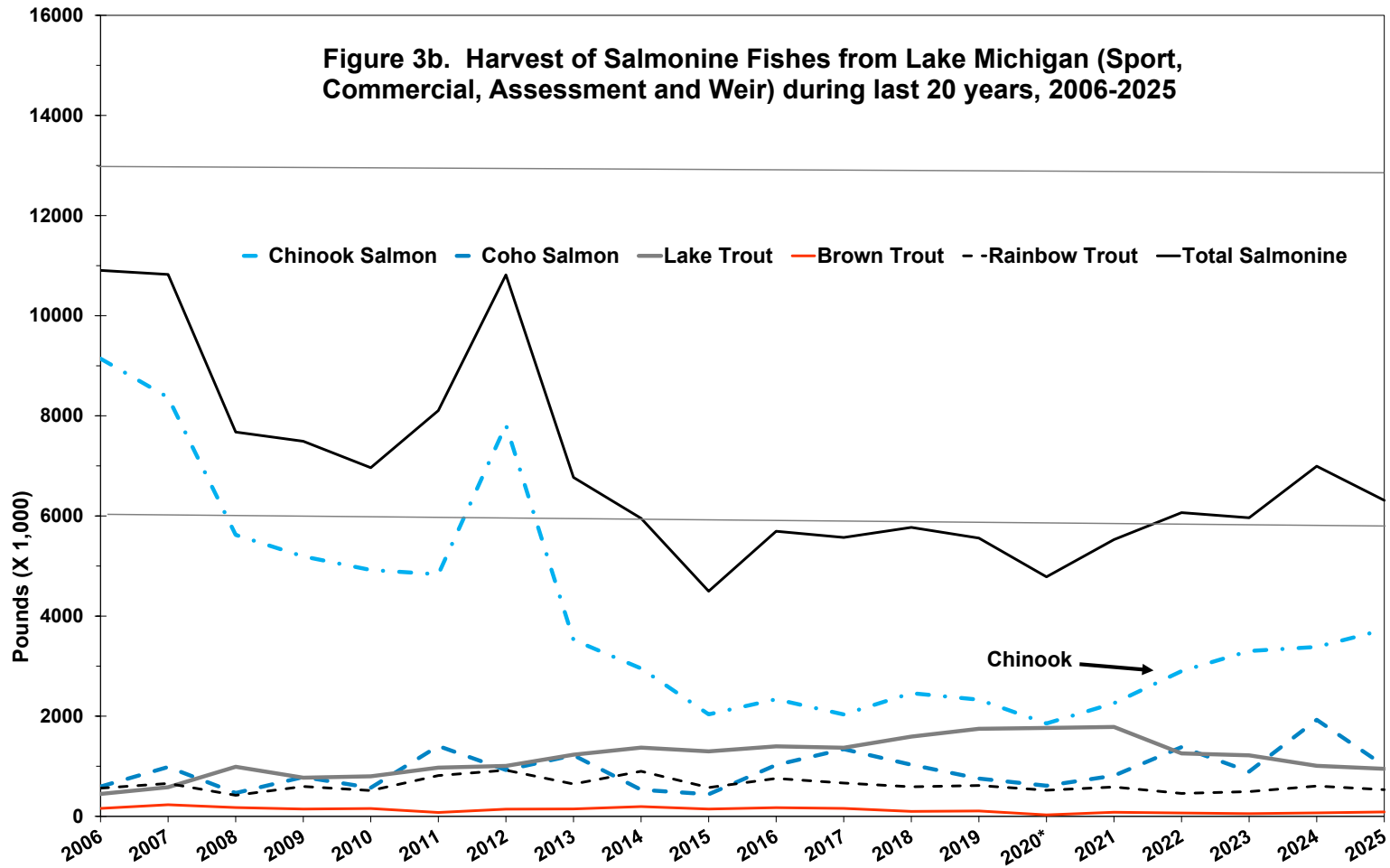


**Figure 2.** Annual harvest of benthivore fishes from Lake Michigan during 1985-2025. Gray horizontal lines indicate the target range for annual harvest of lake whitefish (4 to 6 million lbs) as stated in the Benthivore Objective.

**Figure 3a. Harvest of Salmonine Fishes from Lake Michigan (Sport, Commercial, Assessment and Weir), 1985-2025**

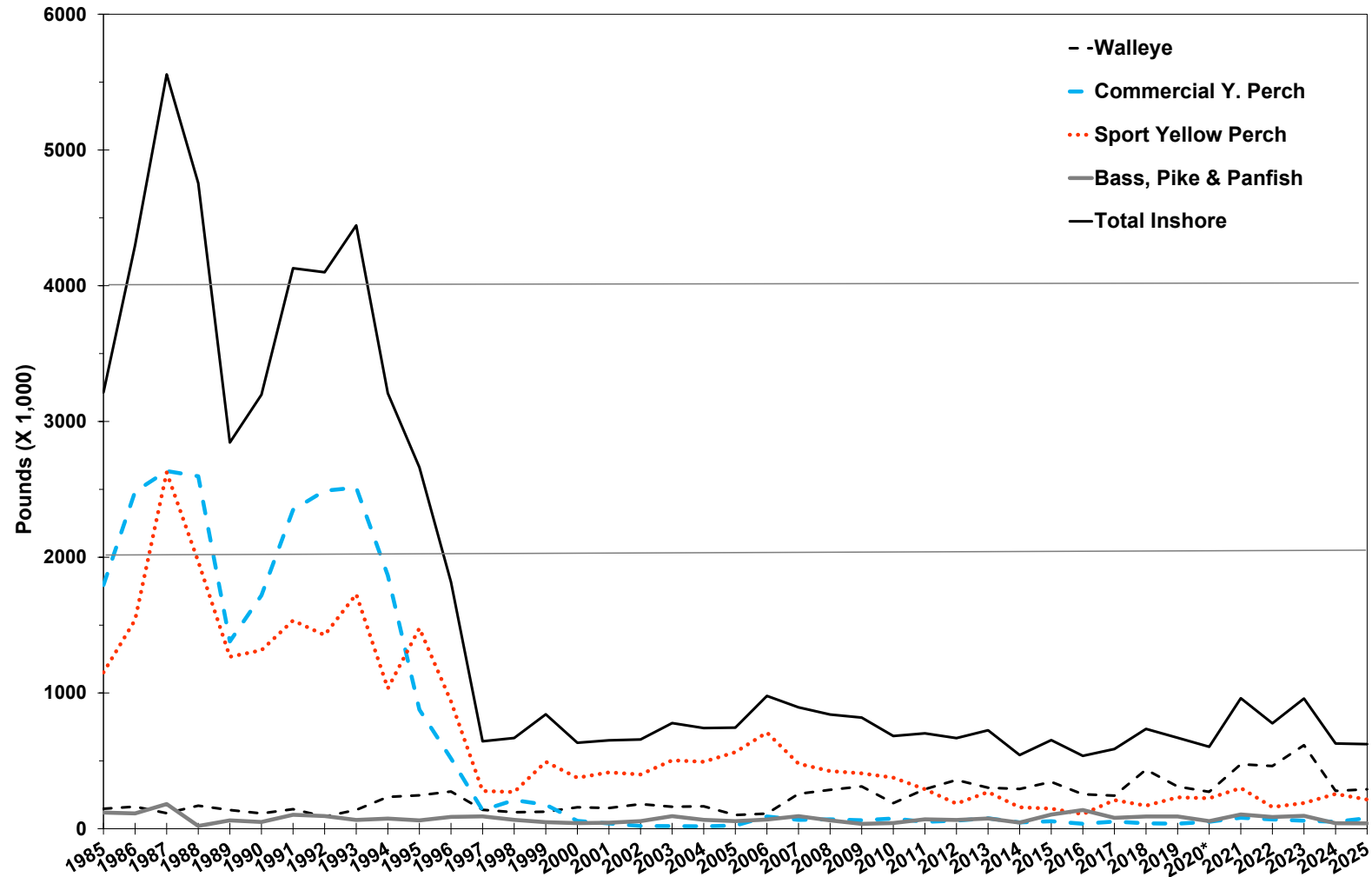


**Figure 3a.** Annual harvest of salmonines from Lake Michigan during 1985-2025. Gray horizontal lines indicate the target range for annual harvest of salmonines (6 to 15 million lbs) as stated in the Salmonine Objective.



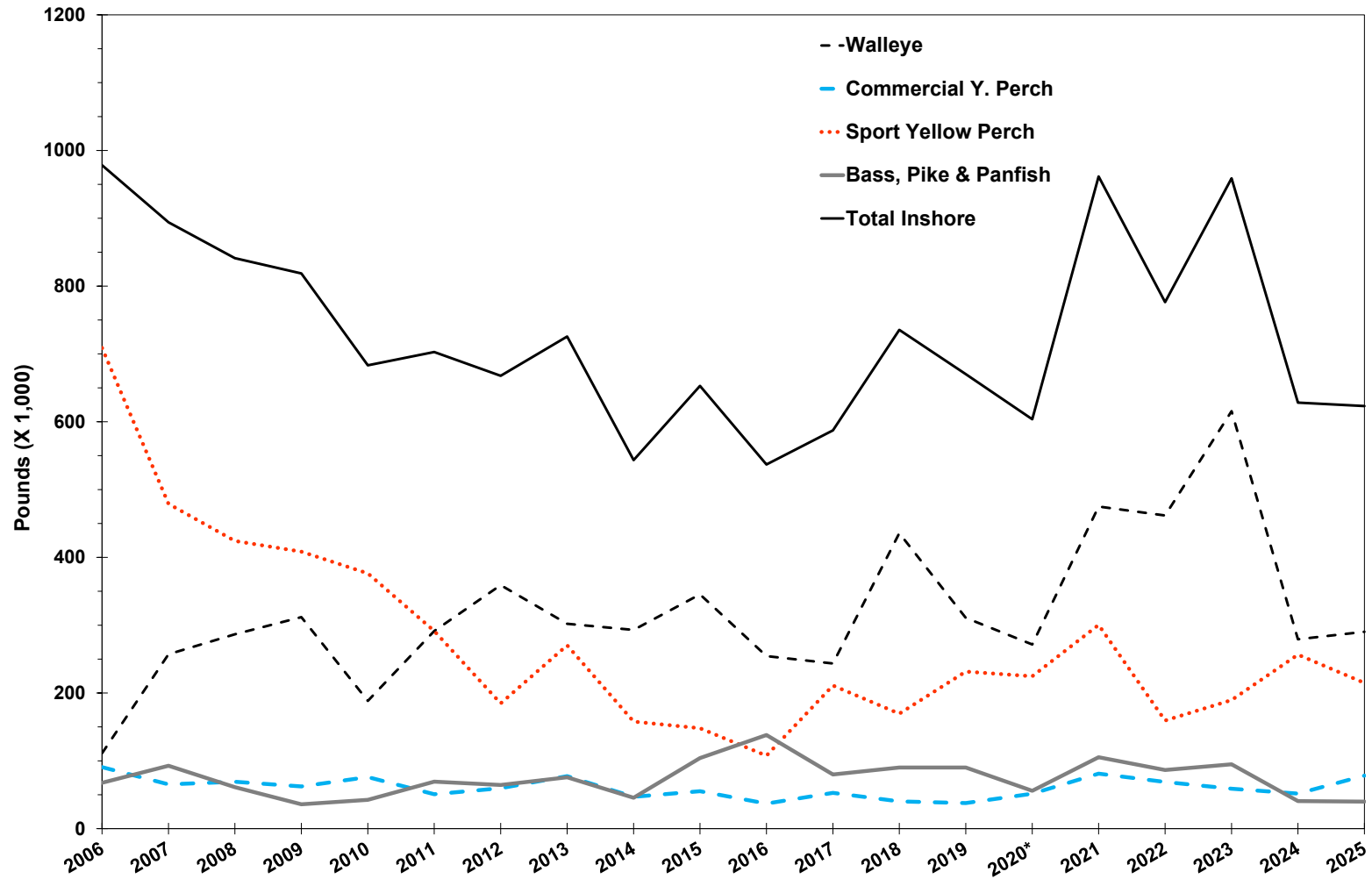
**Figure 3b.** This chart highlights annual harvest of salmonines from Lake Michigan during the last 20 years (2006-2025) and is a subset of the data presented in Fig 3a; note associated change in scale. Gray horizontal lines indicate the target range for annual harvest of salmonines (6 to 15 million lbs).

**Figure 4a. Harvest of Inshore Fishes from Lake Michigan, 1985-2025**



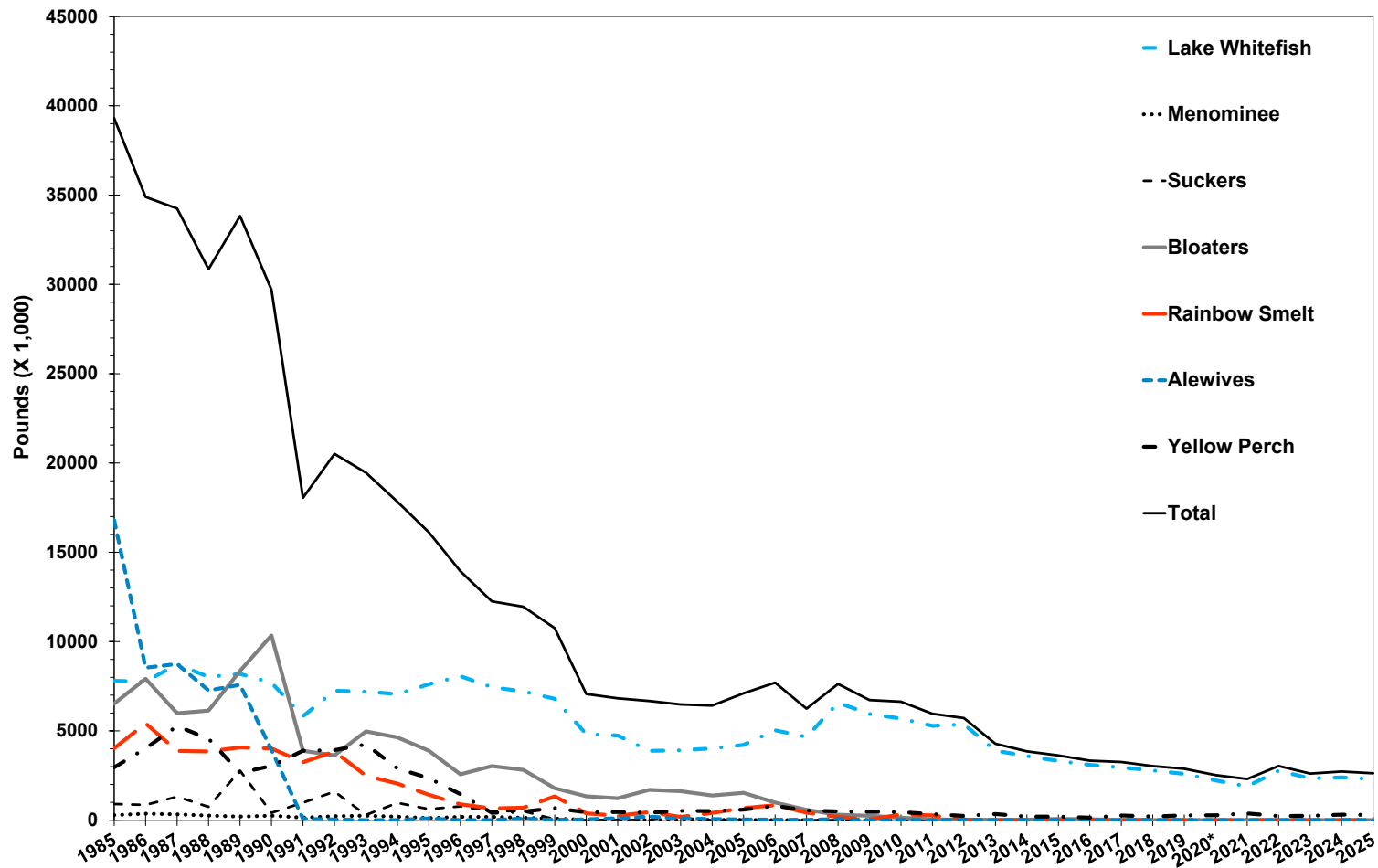
**Figure 4a.** Annual harvest of inshore fishes from Lake Michigan during 1985-2025. Gray horizontal lines indicate the target range for annual harvest of yellow perch (2 to 4 million lbs) as stated in the Inshore Fish Objective.

**Figure 4b. Harvest of Inshore Fishes from Lake Michigan during last 20 years (2006-2025)**



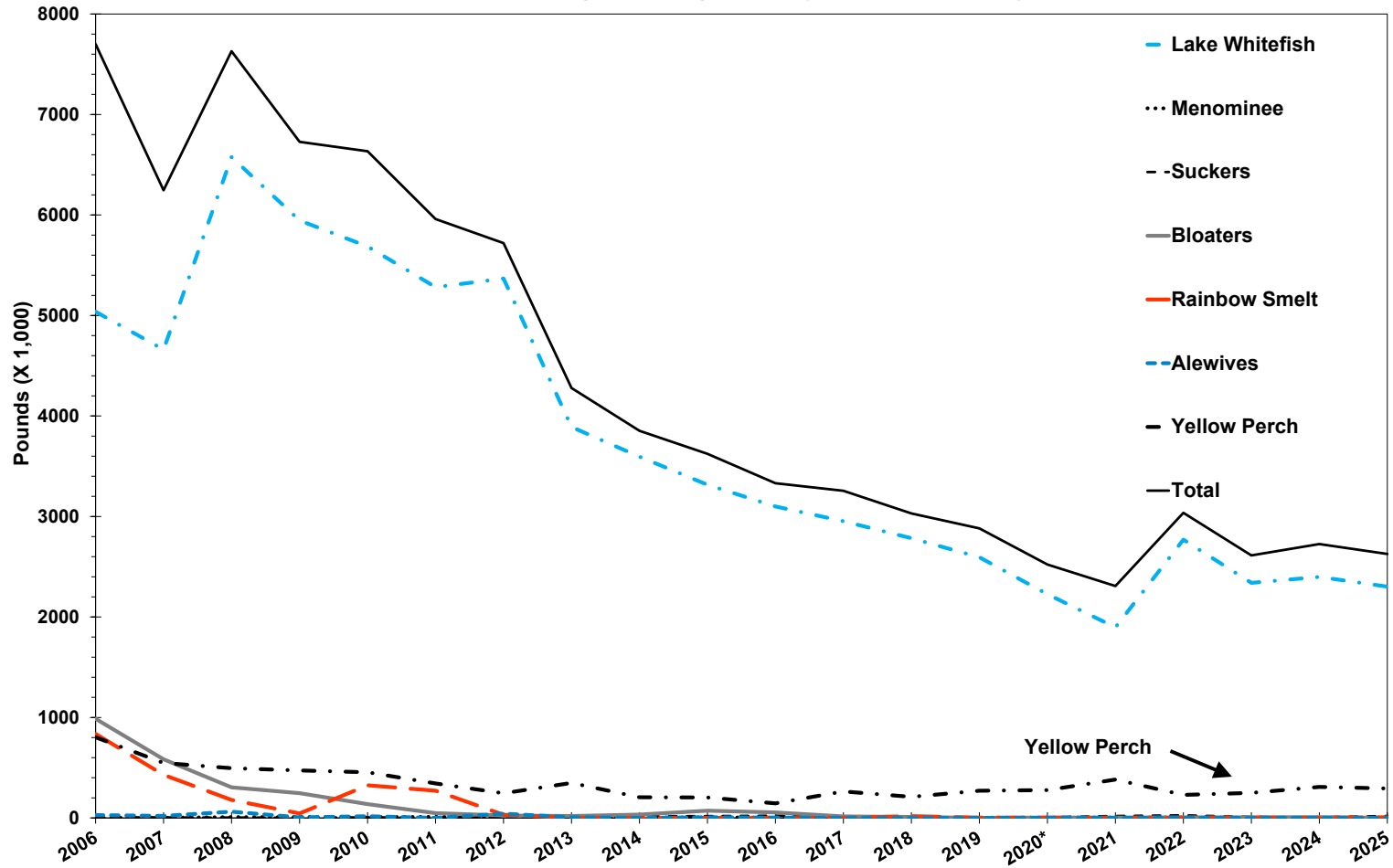
**Figure 4b.** This chart highlights annual harvest of inshore fishes from Lake Michigan during the last 20 years (2006-2025) and is a subset of the data provided in Fig 4a; note associated change in scale. The target range for annual harvest of yellow perch is 2 to 4 million lbs.

**Figure 5a. Harvest of Select Commercially Valuable Fish Species from Lake Michigan, 1985-2025**



**Figure 5a.** Annual harvest of select commercially valuable species from Lake Michigan during 1985-2025.

**Figure 5b. Harvest of Select Commercially Valuable Fish Species from Lake Michigan during last 20 years (2006-2025)**



**Figure 5b.** This chart highlights annual harvest of select species from Lake Michigan during the last 20 years (2006-2025) and is a subset of the data provided in Fig 5a; note associated change in scale.

<b>FIGURE 1.</b>	1985	1986	1987	1988	1989	1990	1991	1992	1993	1994	1995	1996	1997
Commercial	38793.80	33812.10	32272.30	30117.40	33877.20	29641.20	16857.60	19373.00	18156.10	17508.00	15561.43	13779.79	12679.90
Sport	15787.48	15584.65	15216.65	9923.23	9154.66	6704.04	7680.26	6393.24	6946.55	6211.41	7387.11	7126.88	6376.51
Weirs	1140.50	724.00	1130.70	534.80	717.70	641.60	696.50	683.90	753.30	522.35	698.52	885.50	740.50
Assessment	58.80	59.40	59.10	70.50	84.80	56.70	73.70	65.80	60.90	53.07	55.14	90.53	54.64
Incidental	498.60	645.30	540.60	456.20	231.70	205.00	98.20	199.71	261.60	199.70	414.20	110.50	130.50
Total Harvest	56279.18	50825.45	49219.35	41102.13	44066.06	37248.54	25406.26	26715.64	26178.45	24494.54	24116.40	21993.21	19982.05
<b>FIGURE 2.</b>	1985	1986	1987	1988	1989	1990	1991	1992	1993	1994	1995	1996	1997
Burbot	49.40	96.50	69.30	141.60	109.70	71.70	103.40	120.20	52.25	84.22	54.40	31.52	38.80
Lake Whitefish	7802.40	7756.70	8732.10	8023.80	8189.50	7695.20	5822.30	7248.10	7199.10	7062.75	7609.86	8063.13	7447.29
Menominee	284.00	366.00	329.40	260.50	200.80	254.80	147.40	223.60	253.90	196.10	118.40	184.40	183.30
Suckers	905.80	859.10	1313.40	744.50	2773.10	416.80	983.30	1599.50	292.30	973.53	621.25	774.91	505.93
Total Benthivore	9041.60	9078.30	10444.20	9170.40	11273.10	8438.50	7056.40	9191.40	7797.55	8316.60	8403.91	9053.96	8175.32
<b>FIGURE 3.</b>	1985	1986	1987	1988	1989	1990	1991	1992	1993	1994	1995	1996	1997
Chinook Salmon	10335.76	10312.38	8994.27	5116.94	4351.45	2977.71	2822.94	2059.62	1842.28	1762.11	2627.98	3353.07	2859.06
Coho Salmon	2564.59	1515.62	1696.12	1167.46	1664.53	1101.64	676.45	1018.48	1229.13	1003.69	827.00	1269.25	1295.42
Lake Trout	2570.74	2461.43	2427.06	2382.34	2512.09	2084.82	2057.36	1542.95	1775.48	1875.40	2302.31	1667.49	1785.47
Brown Trout	629.50	740.52	664.47	430.28	413.38	366.83	452.44	321.99	444.13	510.37	381.54	372.34	473.21
Rainbow Trout	548.30	512.30	788.19	801.53	971.13	757.88	991.56	1112.67	1168.03	1115.30	1037.89	996.28	1044.93
Total Salmonine	16648.88	15542.25	14570.11	9898.55	9912.58	7288.88	7000.74	6055.71	6459.05	6266.87	7176.71	7658.43	7458.08
Proportion Lake Trout	0.15	0.16	0.17	0.24	0.25	0.29	0.29	0.25	0.27	0.30	0.32	0.22	0.24
<b>FIGURE 4.</b>	1985	1986	1987	1988	1989	1990	1991	1992	1993	1994	1995	1996	1997
Walleye	147.50	163.11	114.95	170.24	137.71	112.68	143.93	89.54	138.56	234.70	246.43	274.48	139.14
Commercial Y. Perch	1795.20	2483.40	2634.90	2596.80	1379.60	1719.30	2348.80	2490.10	2513.00	1865.50	877.03	517.04	136.20
Sport Yellow Perch	1151.50	1538.68	2624.87	1967.63	1266.55	1315.17	1533.72	1426.18	1728.18	1033.42	1476.86	938.09	277.95
Bass, Pike & Panfish	119.10	112.70	181.90	20.34	61.42	49.86	102.79	93.15	64.89	74.83	61.75	87.07	90.81
Total Inshore	3213.30	4297.88	5556.62	4755.02	2845.28	3197.02	4129.23	4098.97	4444.63	3208.45	2662.06	1816.68	644.10
<b>FIGURE 5.</b>	1985	1986	1987	1988	1989	1990	1991	1992	1993	1994	1995	1996	1997
Lake Whitefish	7802.40	7756.70	8732.10	8023.80	8189.50	7695.20	5822.30	7248.10	7199.10	7062.75	7609.86	8063.13	7447.29
Menominee	284.00	366.00	329.40	260.50	200.80	254.80	147.40	223.60	253.90	196.10	118.40	184.40	183.30
Suckers	905.80	859.10	1313.40	744.50	2773.10	416.80	983.30	1599.50	292.30	973.53	621.25	774.91	505.93
Bloaters	6524.60	7919.40	5987.10	6138.70	8360.70	10342.30	3885.70	3630.20	4971.20	4631.98	3890.64	2567.71	3030.94
Rainbow Smelt	4028.40	5421.10	3876.10	3847.60	4070.30	4017.60	3246.60	3845.00	2491.70	2049.66	1422.35	889.31	663.44
Alewives	16802.40	8539.40	8743.90	7268.50	7579.90	3934.90	76.60	40.90	3.50	9.38	101.76	1.16	5.50
Yellow Perch	2952.50	4028.08	5265.37	4568.13	2650.75	3038.77	3886.52	3920.58	4244.88	2899.72	2354.49	1458.99	416.59
Total	39300.10	34889.78	34247.37	30851.73	33825.05	29700.37	18048.42	20507.88	19456.58	17823.13	16118.75	13939.61	12252.99

<b>FIGURE 1.</b>	1998	1999	2000	2001	2002	2003	2004	2005	2006	2007	2008	2009	2010
Commercial	12641.45	11256.38	7333.94	6893.82	6583.92	6164.76	6111.18	6735.31	7180.81	5943.79	7955.73	6603.57	6572.61
Sport	7095.20	7746.97	8143.37	8515.90	10739.96	9204.68	10941.46	10061.50	10990.32	10832.70	7348.65	7560.97	7006.40
Weirs	515.27	840.70	1124.00	1100.05	1210.46	688.94	746.91	442.57	603.32	518.47	314.06	386.10	225.63
Assessment	29.46	39.88	34.86	38.82	34.98	33.61	35.60	34.70	41.36	32.96	30.02	30.70	38.54
Incidental	178.94	229.70	231.45	192.42	129.00	133.60	130.00	175.40	0.00	104.20	32.37	0.00	0.00
Total Harvest	20460.32	20113.63	16867.61	16741.01	18698.32	16225.59	17965.14	17449.49	18815.81	17432.12	15680.82	14581.34	13843.17
<b>FIGURE 2.</b>	1998	1999	2000	2001	2002	2003	2004	2005	2006	2007	2008	2009	2010
Burbot	47.89	33.60	15.05	18.67	13.65	20.88	11.73	14.68	31.28	11.53	11.89	12.81	12.54
Lake Whitefish	7205.64	6793.04	4816.24	4745.98	3882.62	3909.84	4022.94	4215.90	5037.78	4660.22	6575.91	5945.74	5686.74
Menominee	135.35	85.75	27.15	12.52	8.65	6.72	21.09	12.70	1.36	2.21	7.65	9.29	6.88
Suckers	514.99	47.90	8.96	17.71	7.11	125.93	3.48	29.41	6.77	4.57	4.21	2.68	6.24
Total Benthivore	7903.87	6960.29	4867.41	4794.88	3912.03	4063.36	4059.25	4272.70	5077.19	4678.54	6599.66	5970.52	5712.40
<b>FIGURE 3.</b>	1998	1999	2000	2001	2002	2003	2004	2005	2006	2007	2008	2009	2010
Chinook Salmon	3038.01	4008.26	4473.57	5252.12	7359.65	6886.20	9186.92	8273.10	9142.23	8367.93	5622.71	5192.51	4921.57
Coho Salmon	895.08	1582.16	2155.83	1509.11	1835.28	1012.31	952.39	423.76	595.33	985.84	466.30	784.87	570.66
Lake Trout	2666.32	1987.84	1518.25	1436.25	1010.68	633.75	523.39	533.26	447.68	581.21	990.35	771.49	800.80
Brown Trout	317.84	407.70	513.56	330.12	392.86	222.21	183.80	260.81	158.11	231.86	176.22	146.06	155.39
Rainbow Trout	1353.61	1161.79	928.58	1167.75	1173.18	711.09	456.91	679.92	561.83	656.85	420.75	596.31	515.75
Total Salmonine	8270.85	9147.74	9589.78	9695.35	11771.65	9465.55	11303.40	10170.85	10905.17	10823.70	7676.32	7491.23	6964.17
Proportion Lake Trout	0.32	0.22	0.16	0.15	0.09	0.07	0.05	0.05	0.04	0.05	0.13	0.10	0.11
<b>FIGURE 4.</b>	1998	1999	2000	2001	2002	2003	2004	2005	2006	2007	2008	2009	2010
Walleye	121.65	125.47	158.09	152.55	181.17	162.27	164.94	101.06	111.14	257.12	286.65	311.95	188.32
Commercial Y. Perch	211.05	176.65	57.98	38.99	19.99	19.35	17.98	23.58	90.70	65.30	69.11	62.28	75.99
Sport Yellow Perch	270.54	492.94	375.74	415.38	399.81	503.87	492.97	563.92	708.86	478.98	424.29	408.51	376.47
Bass, Pike & Panfish	65.15	48.05	41.21	44.77	56.24	92.78	65.67	56.05	67.58	92.67	61.24	35.92	42.49
Total Inshore	668.39	843.10	633.02	651.68	657.21	778.27	741.56	744.61	978.28	894.06	841.29	818.65	683.27
<b>FIGURE 5.</b>	1998	1999	2000	2001	2002	2003	2004	2005	2006	2007	2008	2009	2010
Lake Whitefish	7205.64	6793.04	4816.24	4745.98	3882.62	3909.84	4022.94	4215.90	5037.78	4660.22	6575.91	5945.74	5686.74
Menominee	135.35	85.75	27.15	12.52	8.65	6.72	21.09	12.70	1.36	2.21	7.65	9.29	6.88
Suckers	514.99	47.90	8.96	17.71	7.11	125.93	3.48	29.41	6.77	4.57	4.21	2.68	6.24
Bloaters	2817.43	1792.95	1335.53	1226.78	1701.83	1626.47	1385.65	1531.92	986.64	583.81	304.35	246.76	137.78
Rainbow Smelt	701.48	1336.40	387.92	251.24	452.63	184.77	408.93	676.42	836.38	428.76	179.28	44.75	325.03
Alewives	92.90	16.86	48.90	109.10	200.13	97.60	63.81	44.26	28.77	20.32	62.49	6.49	17.36
Yellow Perch	484.25	680.80	437.91	460.71	421.80	526.10	513.30	591.83	802.85	546.65	495.39	472.71	454.20
Total	11952.04	10753.69	7062.62	6824.04	6674.78	6477.42	6419.21	7102.44	7700.55	6246.55	7629.28	6728.41	6634.23

<b>FIGURE 1.</b>	2011	2012	2013	2014	2015	2016	2017	2018	2019	2020*	2021	2022	2023
Commercial	5907.78	5970.91	4507.77	4202.22	3682.14	3563.44	3371.53	3102.40	3074.30	2596.05	2416.12	3292.44	2888.66
Sport	7788.19	10530.17	6391.27	5609.40	4791.53	5623.86	5406.01	5847.78	5483.51	4723.95	5649.19	5881.36	6092.15
Weirs	711.90	437.59	514.83	314.13	68.61	208.33	376.32	376.85	276.61	325.03	358.42	443.91	300.93
Assessment	38.57	34.63	38.03	33.26	44.50	54.46	47.37	45.96	44.87	12.07	47.16	56.24	48.37
Incidental	0.00	0.00	0.00	0.00	15.60	12.41	10.44	5.65	2.71	5.04		16.54	0.14
Total Harvest	14446.44	16973.30	11451.91	10159.01	8602.39	9462.51	9211.67	9378.64	8882.00	7662.15	8470.88	9690.48	9330.25
<b>FIGURE 2.</b>	2011	2012	2013	2014	2015	2016	2017	2018	2019	2020*	2021	2022	2023
Burbot	19.05	13.13	10.59	9.08	10.21	10.32	11.52	6.26	5.08	6.20	13.70	13.86	14.84
Lake Whitefish	5282.21	5367.27	3890.74	3594.49	3315.90	3099.86	2953.13	2783.51	2593.86	2226.21	1896.66	2769.77	2398.68
Menominee	11.09	4.81	2.70	4.16	5.53	4.32	5.46	2.06	2.51	3.96	4.22	4.84	3.51
Suckers	3.32	3.74	8.63	15.11	18.41	22.72	17.88	5.69	8.41	7.37	19.11	26.09	10.34
Total Benthivore	5315.67	5388.95	3912.67	3622.84	3350.04	3137.22	2987.97	2797.52	2609.86	2243.74	1933.69	2814.56	2427.37
<b>FIGURE 3.</b>	2011	2012	2013	2014	2015	2016	2017	2018	2019	2020*	2021	2022	2023
Chinook Salmon	4835.71	7818.96	3525.01	2954.23	2037.31	2339.38	2035.08	2459.70	2329.85	1855.31	2259.50	2901.57	3303.71
Coho Salmon	1405.33	925.74	1220.32	530.56	441.20	1025.98	1341.96	1030.16	755.55	612.26	813.35	1383.28	894.42
Lake Trout	972.61	1006.72	1231.36	1372.30	1296.93	1397.37	1371.36	1593.26	1748.36	1765.23	1785.69	1256.19	1217.78
Brown Trout	77.06	143.00	147.06	194.75	146.30	174.30	157.53	98.74	106.50	29.07	82.04	67.61	54.22
Rainbow Trout	814.08	921.74	645.48	901.17	574.92	757.62	665.01	590.53	616.44	522.72	586.70	458.33	493.22
Total Salmonine	8104.79	10816.15	6769.23	5953.00	4496.66	5694.65	5570.93	5772.40	5556.70	4784.59	5527.28	6066.97	5963.35
Proportion Lake Trout	0.12	0.09	0.18	0.23	0.29	0.25	0.25	0.28	0.31	0.37	0.32	0.21	0.20
<b>FIGURE 4.</b>	2011	2012	2013	2014	2015	2016	2017	2018	2019	2020*	2021	2022	2023
Walleye	291.28	359.15	302.12	293.06	345.48	254.38	243.53	435.75	310.81	271.63	474.91	461.78	615.56
Commercial Y. Perch	50.79	59.67	77.48	46.88	55.15	36.96	52.74	40.15	37.75	51.48	81.13	68.85	58.87
Sport Yellow Perch	291.49	184.63	270.35	157.84	148.13	107.57	211.08	169.52	231.57	224.73	300.34	159.41	189.60
Bass, Pike & Panfish	69.33	64.35	75.74	45.60	104.16	138.06	79.89	90.12	90.13	55.78	105.35	86.42	94.82
Total Inshore	702.88	667.80	725.70	543.38	652.91	536.97	587.24	735.54	670.26	603.61	961.73	776.45	958.85
<b>FIGURE 5.</b>	2011	2012	2013	2014	2015	2016	2017	2018	2019	2020*	2021	2022	2023
Lake Whitefish	5282.21	5367.27	3890.74	3594.49	3315.90	3099.86	2953.13	2783.51	2593.86	2226.21	1896.66	2769.77	2339.96
Menominee	11.09	4.81	2.70	4.16	5.53	4.32	5.46	2.06	2.51	3.96	4.22	4.84	3.51
Suckers	3.32	3.74	8.63	15.11	18.41	22.72	17.88	5.69	8.41	7.37	19.11	26.09	10.34
Bloaters	48.36	24.29	19.54	33.32	71.92	54.62	14.87	9.94	0.86	3.78	3.97	6.03	6.15
Rainbow Smelt	270.52	32.00	1.95	0.01	0.52	0.11	0.10	17.95	3.55	2.91	0.22	0.17	2.92
Alewives	1.00	42.57	5.95	0.37	7.57	3.74	0.23	1.19	1.18	1.12	1.25	0.39	0.81
Yellow Perch	343.02	245.15	348.73	205.38	203.80	145.28	264.19	210.31	270.74	276.75	382.40	229.16	249.12
Total	5959.51	5719.82	4278.24	3852.84	3623.64	3330.64	3255.84	3030.65	2881.10	2522.11	2307.84	3036.46	2612.80

<b>FIGURE 1.</b>	2024	2025
Commercial	2955.66	2622.98
Sport	6781.42	6230.39
Weirs	306.98	255.15
Assessment	51.52	41.43
Incidental	1.26	143.09
Total Harvest	10096.85	9293.05

<b>FIGURE 2.</b>	2024	2025
Burbot	14.57	13.45
Lake Whitefish	2398.68	2301.95
Menominee	0.91	2.12
Suckers	6.73	19.54
Total Benthivore	2420.90	2337.07

<b>FIGURE 3.</b>	2024	2025
Chinook Salmon	3383.45	3730.52
Coho Salmon	1928.46	1012.34
Lake Trout	1008.18	949.55
Brown Trout	68.19	87.54
Rainbow Trout	605.11	531.78
Total Salmonine	6993.39	6311.73
Proportion Lake Trout	0.14	0.15

<b>FIGURE 4.</b>	2024	2025
Walleye	279.32	290.24
Commercial Y. Perch	51.74	78.14
Sport Yellow Perch	256.54	214.86
Bass, Pike & Panfish	40.57	39.84
Total Inshore	628.16	623.08

<b>FIGURE 5.</b>	2024	2025
Lake Whitefish	2398.68	2301.95
Menominee	0.91	2.12
Suckers	6.73	19.54
Bloaters	7.89	0.94
Rainbow Smelt	1.35	6.90
Alewives	0.69	1.00
Yellow Perch	309.15	293.95
Total	2725.40	2626.39

SUMMARY (X 1,000 Pounds)

SPECIES	1985	1986	1987	1988	1989	1990	1991	1992	1993	1994	1995	1996	1997
chinook salmon	10335.76	10312.38	8994.268	5116.938	4351.454	2977.711	2822.937	2059.618	1842.279	1762.109	2627.977	3353.07	2859.061
coho salmon	2564.587	1515.623	1696.118	1167.456	1664.531	1101.644	676.445	1018.48	1229.13	1003.687	826.997	1269.25	1295.416
pink salmon	2.4	0.1	6.5	0	2	0	0.1	0	0.2	0	0	0	0
lake trout	2570.738	2461.434	2427.063	2382.343	2512.094	2084.818	2057.36	1542.95	1775.482	1875.4	2302.307	1667.49	1785.474
brook trout	8.9	9.681	2.944	7.029	4.061	9.551	5.601	16.08	5.306	9.62	2.385	0.732	0.669
brown trout	629.498	740.519	664.47	430.281	413.378	366.829	452.44	321.987	444.134	510.368	381.538	372.338	473.206
rainbow trout	548.295	512.3	788.187	801.528	971.126	757.881	991.562	1112.673	1168.025	1115.302	1037.888	996.283	1044.925
walleye	147.496	163.105	114.945	170.239	137.712	112.679	143.926	89.544	138.563	234.704	246.427	274.482	139.144
yellow perch	2952.504	4028.077	5265.372	4568.133	2650.749	3038.772	3886.516	3920.583	4244.877	2899.722	2354.485	1458.99	416.586
smb,musky,northern pike, and panfish	119.1	112.7	181.9	20.343	61.422	49.864	102.788	93.145	64.891	74.827	61.747	87.069	90.805
burbot	49.4	96.5	69.3	141.6	109.7	71.7	103.4	120.2	52.25	84.22	54.4	31.52	38.8
lake whitefish	7802.4	7756.7	8732.1	8023.8	8189.5	7695.2	5822.3	7248.1	7199.1	7062.752	7609.864	8063.13	7447.29
menominee	284	366	329.4	260.5	200.8	254.8	147.4	223.6	253.9	196.1	118.4	184.4	183.303
sturgeon	0	0.437	0.882	0.836	0.73	0.686	1.186	1.784	1.414	1.071	1.883	1.371	1.552
suckers	905.8	859.1	1313.4	744.5	2773.1	416.8	983.3	1599.5	292.3	973.532	621.25	774.91	505.93
alewives	16802.4	8539.4	8743.9	7268.5	7579.9	3934.9	76.6	40.9	3.5	9.38	101.757	1.16	5.5
bloaters	6524.6	7919.4	5987.1	6138.7	8360.7	10342.3	3885.7	3630.2	4971.2	4631.98	3890.64	2567.71	3030.94
lake herring	2.9	10.9	25.4	11.8	12.8	14.8	0.1	1.6	0.2	0.1	0.1	0	0.01
rainbow smelt	4028.4	5421.1	3876.1	3847.6	4070.3	4017.6	3246.6	3845	2491.7	2049.661	1422.35	889.31	663.44
TOTAL	56545.1	56279.18	49219.35	41102.13	44066.06	37248.54	25406.26	26885.94	26178.45	24494.54	23662.4	21993.2	19982.05

**SUMMARY OF LAKEWIDE HARVEST FOR ALL AGENCIES IN 1000'S OF POUNDS  
THIS INCLUDES COMMERCIAL, SPORT, WEIR, ASSESSMENT AND INCIDENTAL CATCH**

SUMMARY (X 1,000 Pounds)

SPECIES	1998	1999	2000	2001	2002	2003	2004	2005	2006	2007	2008	2009	2010
chinook salmon	3038.005	4008.256	4473.565	5252.121	7359.653	6886.199	9186.923	8273.101	9142.229	8367.931	5622.706	5192.508	4921.566
coho salmon	895.077	1582.163	2155.828	1509.109	1835.275	1012.308	952.387	423.76	595.326	985.842	466.296	784.87	570.662
pink salmon	0	0	0	0.05	0.041	0	0.01	0	0	0	0	0	0
lake trout	2666.321	1987.835	1518.253	1436.249	1010.683	633.752	523.389	533.263	447.684	581.214	990.346	771.485	800.803
brook trout	0.667	0.648	0.633	1.163	0.411	0.5	0	0	0.051	0.1	0	0	0
brown trout	317.836	407.701	513.562	330.12	392.858	222.207	183.797	260.806	158.108	231.861	176.22	146.06	155.39
rainbow trout	1353.609	1161.788	928.576	1167.748	1173.176	711.085	456.905	679.921	561.825	656.847	420.75	596.31	515.75
walleye	121.649	125.465	158.091	152.546	181.167	162.272	164.94	101.064	111.14	257.115	286.646	311.946	188.319
yellow perch	484.249	680.803	437.909	460.711	421.802	526.103	513.301	591.831	802.854	546.654	495.391	472.712	454.202
smb,musky,northern pike, and panfish	65.145	48.045	41.208	44.768	56.235	92.779	65.668	56.05	67.582	92.67	61.24	35.92	42.49
burbot	47.893	33.601	15.046	18.674	13.645	20.875	11.728	14.682	31.283	11.533	11.887	12.811	12.541
lake whitefish	7205.642	6793.035	4816.243	4745.976	3882.623	3909.841	4022.944	4215.897	5037.782	4660.22	6575.914	5945.74	5686.741
menominee	135.347	85.75	27.154	12.515	8.651	6.715	21.093	12.702	1.36	2.21	7.654	9.286	6.881
sturgeon	2.031	3.523	0	4.322	0	6.038	0.151	4.3	0.03	0.01	0.03	0	0.02
suckers	514.9876	47.899	8.962	17.711	7.111	125.931	3.481	29.414	6.769	4.574	4.209	2.681	6.239
alewives	92.903	16.857	48.904	109.097	200.129	97.6	63.81	44.262	28.774	20.321	62.489	6.487	17.356
bloaters	2817.428	1792.945	1335.534	1226.781	1701.834	1626.466	1385.654	1531.916	986.635	583.809	304.347	246.756	137.779
lake herring	0.05	0.92	0.22	0.11	0.394	0.152	0.033	0.1	0	0.445	15.418	1.025	1.397
rainbow smelt	701.48	1336.399	387.918	251.244	452.632	184.766	408.929	676.416	836.38	428.76	179.28	44.745	325.034
TOTAL	20460.32	20113.63	16867.61	16741.01	18698.32	16225.59	17965.14	17449.49	18815.81	17432.12	15680.82	14581.34	13843.17

**SUMMARY OF LAKEWIDE HARVEST FOR ALL AGENCIES IN 1000'S OF POUNDS  
THIS INCLUDES COMMERCIAL, SPORT, WEIR, ASSESSMENT AND INCIDENTAL CATCH**

## SUMMARY

(X 1,000 Pounds)

SPECIES	2011	2012	2013	2014	2015	2016	2017	2018	2019	2020*	2021	2022	2023
chinook salmon	4835.711	7818.958	3525.012	2954.228	2037.314	2339.382	2035.075	2459.701	2329.853	1855.311	2259.496	2901.57	3303.71
coho salmon	1405.332	925.7438	1220.322	530.56	441.2033	1025.979	1341.957	1030.164	755.5492	612.258	813.3516	1383.279	894.42
pink salmon	0	0	0	0	0.032	0	0.108	0.036	0.089	0.263	0.013	3.39676	0.319
lake trout	972.607	1006.715	1231.361	1372.295	1296.934	1397.374	1371.357	1593.261	1748.355	1765.234	1785.69	1256.19	1217.78
brook trout	0	0	1.2	0	0	0	0	0	0	0	0.012	0.008	0.00
brown trout	77.0645	143.001	147.055	194.745	146.296	174.295	157.532	98.74235	106.5026	29.066	82.0441	67.60616	54.22
rainbow trout	814.08	921.736	645.482	901.17	574.917	757.621	665.007	590.5334	616.4412	522.718	586.7008	458.33	493.2207
walleye	291.279	359.151	302.12	293.0571	345.478	254.376	243.527	435.745	310.806	271.6275	474.9123	461.776	615.5601
yellow perch	343.019	245.149	348.728	205.376	203.802	145.276	264.186	210.3089	270.7432	276.754	382.4041	229.1606	249.1184
smb,musky,northern pike, and panfish	69.33	64.348	75.742	45.6	104.156	138.063	79.891	90.12496	90.13414	55.777	105.3511	86.42136	94.81722
burbot	19.054	13.131	10.59	9.075	10.209	10.32	11.516	6.257689	5.07579	6.197	13.69688	13.86108	14.84036
lake whitefish	5282.207	5367.268	3890.744	3594.493	3315.897	3099.86	2953.126	2783.513	2593.857	2226.214	1896.661	2769.775	2339.955
menominee	11.088	4.809	2.704	4.161	5.53	4.317	5.456	2.060118	2.512968	3.9591	4.220469	4.842078	3.510031
sturgeon	0.02	0.004	0	0	0	0	0	0	0.001	0	0.023	0.042	0.125
suckers	3.321	3.738	8.6294	15.1144	18.405	22.719	17.875	5.688	8.41196	7.3728	19.11473	26.08528	10.3417
alewives	0.996	42.565	5.948	0.37	7.572	3.741	0.23	1.186677	1.17625	1.115	1.247349	0.390178	0.806743
bloaters	48.358	24.291	19.535	33.317	71.917	54.618	14.867	9.939371	0.855741	3.781	3.973605	6.029	6.148315
lake herring	2.45	0.689	14.789	5.433	22.21	34.455	49.865	43.426	38.08621	21.59047	51.6348	21.549	28.432
rainbow smelt	270.524	32.004	1.947	0.013	0.515	0.11	0.096	17.95103	3.546696	2.914	0.222279	0.174176	2.917467
TOTAL	14446.44	16973.3	11451.91	10159.01	8602.387	9462.506	9211.671	9378.639	8881.998	7662.151	8480.77	9690.48	9330.25

**SUMMARY OF LAKEWIDE HARVEST FOR ALL AGENCIES IN 1000'S OF POUNDS  
THIS INCLUDES COMMERCIAL, SPORT, WEIR, ASSESSMENT AND INCIDENTAL CATCH**

SUMMARY (X 1,000 Pounds)

SPECIES	2024	2025
chinook salmon	3383.45	3730.52
coho salmon	1928.46	1012.34
pink salmon	4.31	0.12
lake trout	1008.18	949.55
brook trout	0.00	0.02
brown trout	68.19	87.54
rainbow trout	605.11	531.78
walleye	279.32	290.24
yellow perch	309.15	293.95
smb,musky,northern pike, and panfish	40.57	39.84
burbot	14.57	13.45
lake whitefish	2398.68	2301.95
menominee	0.91	2.12
sturgeon	0.00	0.04
suckers	6.73	19.54
alewives	0.69	1.00
bloaters	7.89	0.94
lake herring	39.28	11.21
rainbow smelt	1.35	6.90
TOTAL	10096.85	9293.05

**SUMMARY OF LAKEWIDE HARVEST FOR ALL AGENCIES IN 1000'S OF POUNDS  
THIS INCLUDES COMMERCIAL, SPORT, WEIR, ASSESSMENT AND INCIDENTAL CATCH**

COMMERCIAL (X 1,000 Pounds)

SPECIES	1985	1986	1987	1988	1989	1990	1991	1992	1993	1994	1995	1996	1997
chinook salmon	11.6	18.7	142.1	512.7	535.5	442.1	20.6	9	4.8	39.9	82.4	46.6	17.7
coho salmon	0.7	4	3	29.3	31.1	23.1	0	0	0	0	0	0	0
pink salmon	0	0	0	0	0	0	0	0	0	0	0	0	0
lake trout	894	664.2	576.3	627	680.9	751.8	303.9	382.5	411.8	616.8	626.8	748.3	694.7
brook trout	0	0	0	0	0	0	0	0	0	0	0	0	0
brown trout	0	0	0	0	0	0	0	0	0	0	0	0	0
rainbow trout	0	0	0	0	0	0	0	0	0	0	0	0	0
walleye	11.5	12.5	6.6	7.7	19.7	6.1	1.8	1.7	3.8	3.7	1.1	3	8.5
yellow perch	1795.2	2483.4	2634.9	2596.8	1379.6	1719.3	2348.8	2490.1	2513	1865.5	877.03	517.04	136.196
smb,musky,northern pike, and panfish	11	6	6.8	5.7	1.2	0.3	1	0.7	0	0	0	0	0
burbot	48.9	94	65.1	137.2	105	68.9	98.2	117.7	50.7	83.1	53.6	27.5	36.4
lake whitefish	7520.7	7587.2	8682	7996.1	8158.6	7671.4	5795.4	7235.2	7189.6	7045.1	7596.8	8033.7	7414.28
menominee	258.2	322.5	298.9	254.7	191.3	249.3	144.4	222.3	245.6	195.4	118.1	184.3	182.2
sturgeon	0	0	0	0	0	0	0	0	0	0	0	0	0
suckers	903.4	858.4	1312.7	743.7	2772.2	415.7	968.9	1598.2	287.3	972.9	621.1	774.6	505
alewives	16801.5	8536.2	8739.1	7265.2	7577.3	3933	68.6	38.3	2.1	8.7	0	0.15	3.8
bloaters	6507.5	7906.6	5979.6	6129	8342.9	10328.4	3861	3602.1	4956.6	4627.3	3708.1	2555.4	3017.9
lake herring	2.9	10.9	25.4	11.8	12.8	14.8	0.1	1.6	0.1	0.1	0.1	0	0
rainbow smelt	4026.7	5307.5	3799.8	3800.5	4069.1	4017	3244.9	3843.9	2490.7	2049.5	1422.3	889.2	663.22
TOTAL	38793.8	33812.1	32272.3	30117.4	33877.2	29641.2	16857.6	19373	18156.1	17508	15561.43	13779.8	12679.9

**COMMERCIAL HARVEST FOR ALL AGENCIES IN 1000'S OF POUNDS  
THIS INCLUDES ILLINOIS, INDIANA, MICHIGAN, TRIBAL FISHERIES, AND WISCONSIN**

COMMERCIAL (X 1,000 Pounds)

SPECIES	1998	1999	2000	2001	2002	2003	2004	2005	2006	2007	2008	2009	2010
chinook salmon	27.432	8.25	34.78	29.11	15.747	2.949	1.307	4.036	5.623	3.893	137.963	3.073	2.382
coho salmon	0	0	0	0	0	0	0.005	0	0.007	0	2.32	0	0
pink salmon	0	0	0	0	0	0	0	0	0	0	0	0	0
lake trout	902.723	979.39	622.29	490.52	290.329	182.378	169.916	198.288	236.563	270.301	651.175	391.213	425.699
brook trout	0	0	0	0	0	0	0	0	0	0	0	0	0
brown trout	0	0	0	0	0	0	0	0	0	0.008	0	0	0
rainbow trout	0	0	0	0	0	0	0	0	0	0	0	0	0
walleye	1.55	1.33	12.72	12.86	15.235	9.141	21.968	17.851	2.536	20.223	62.157	11.117	9.447
yellow perch	211.052	176.65	57.98	38.99	19.99	19.349	17.981	23.575	90.695	65.296	69.109	62.276	75.994
smb,musky,northern pike, and panfish	0	0	0	0	0	0.01	0	0	0	0	0	0	0
burbot	47.529	32.39	12.8	17	11.95	19.7	10.84	13.634	13.316	10.8	11.075	12.2	12
lake whitefish	7196.453	6782.548	4789.295	4703.814	3869.955	3893.483	4010.202	4192.007	4979.796	4642.753	6483.964	5815.437	5558.974
menominee	134.807	85.57	26.51	10.526	8.065	6.116	20.616	11.753	0.989	1.919	7.259	8.933	6.687
sturgeon	0	0	0	0	0	0	0	0	0	0	0	0	0
suckers	514.559	47.252	7.845	8.558	2.23	125.1	2.401	24.503	0.687	0.208	2.912	1.918	4.999
alewives	89.9	15	47.4	106	197.4	96	62.5	42.9	28.1	0	30.825	5.4	16.1
bloaters	2814.035	1790.858	1334.278	1225.153	1700.122	1625.785	1384.801	1530.865	986.227	499.25	302.639	246.49	137.276
lake herring	0.048	0.92	0.22	0.11	0.394	0.152	0.032	0	0	0.435	15.108	0.815	0.047
rainbow smelt	701.359	1336.225	387.819	251.181	452.5	184.6	408.611	675.9	836.27	428.7	179.22	44.7	323
TOTAL	12641.45	11256.38	7333.937	6893.822	6583.917	6164.763	6111.18	6735.312	7180.809	5943.786	7955.726	6603.572	6572.605

**COMMERCIAL HARVEST FOR ALL AGENCIES IN 1000'S OF POUNDS  
THIS INCLUDES ILLINOIS, INDIANA, MICHIGAN, TRIBAL FISHERIES AND WISCONSIN**

COMMERCIAL (X 1,000 Pounds)

SPECIES	2011	2012	2013	2014	2015	2016	2017	2018	2019	2020*	2021	2022	2023
chinook salmon	6.662	3.427	3.177	0.598	0.286	3.06	7.37	2.388	2.9081	6.1825	7.47126	10.063	3.253
coho salmon	0.398	0	0.093	0	0.004	0.004	0.06	0.007	0	0	0	0	0.025
pink salmon	0	0	0	0	0	0	0	0	0	0	0	0	0
lake trout	487.775	506.513	657.808	668.876	443.102	551.3	559.502	536.432	581.7676	527.4057	546.9352	539.49	478.006
brook trout	0	0	0	0	0	0	0	0	0	0	0	0	0
brown trout	0	0	0	0	0	0	0	0	0	0	0	0	0
rainbow trout	0	0	0	0	0	0	0	0	0.008	0	0	0	0
walleye	9.274	9.148	10.418	7.307	5.41	7.14	3.508	6.092	5.481	4.1765	4.6281	3.555	5.468
yellow perch	50.789	59.672	77.484	46.884	55.151	36.961	52.741	40.149	37.7491	51.478	81.1252	68.849	58.869
smb, musky, northern pike, and panfish	0	0	0.05	0	0.035	0	0.022	0.001	0.069	0.065	0.004	0	0
burbot	18.27	12.032	9.448	8.418	0.258	0.14	0.036	0	1.436	1.094	3.2172	2.9882	13.4
lake whitefish	5007.474	5274.197	3714.599	3418.841	3078.979	2880.884	2707.272	2479.336	2430.321	1987.216	1746.73	2635.338	2302.939
menominee	9.664	4.327	2.336	3.769	5.04	3.959	5.251	1.817	2.06375	3.5331	3.8534	4.4	3.254
sturgeon	0	0	0	0	0	0	0	0	0	0	0	0	8.665
suckers	2.242	2.793	3.5414	13.3594	15.375	21.3	16.685	5.168	5.742	6.8188	16.99877	22.007	0.197
alewives	0.5	42	5.3	0	0	0	0	0	0	0	0	0	5.842
bloaters	48.194	24.272	19.352	33.294	71.11	53.976	14.111	9.559	0.7696	3.651	3.376	4.866	5.907
lake herring	0.04	0.528	2.227	0.863	6.894	4.72	4.97	3.735	2.527	1.51947	1.6058	0.83	5.842
rainbow smelt	266.5	32	1.941	0.008	0.5	0	0	17.711	3.459	2.91	0.174	0.05	2.902
TOTAL	5907.782	5970.909	4507.774	4202.217	3682.144	3563.444	3371.528	3102.395	3074.301	2596.05	2416.119	3292.437	2888.659

**COMMERCIAL HARVEST FOR ALL AGENCIES IN 1000'S OF POUNDS  
THIS INCLUDES ILLINOIS, INDIANA, MICHIGAN, TRIBAL FISHERIES AND WISCONSIN**

COMMERCIAL (X 1,000 Pounds)

SPECIES	2024	2025
chinook salmon	4.44	5.24
coho salmon	4.99	4.34
pink salmon	0.00	0.00
lake trout	488.10	401.03
brook trout	0.00	0.00
brown trout	0.08	0.03
rainbow trout	0.06	0.06
walleye	6.00	10.16
yellow perch	51.74	78.14
smb,musky,northern pike, and panfish	0.75	0.43
burbot	12.25	12.00
lake whitefish	2371.20	2082.95
menominee	0.79	1.86
sturgeon	5.63	0.00
suckers	0.00	17.97
alewives	0.75	0.00
bloaters	7.60	0.71
lake herring	0.75	1.45
rainbow smelt	1.29	6.62
TOTAL	2955.66	2622.98

**COMMERCIAL HARVEST FOR ALL AGENCIES IN 1000'S OF POUNDS  
THIS INCLUDES ILLINOIS, INDIANA, MICHIGAN, TRIBAL FISHERIES AND WISCONSIN**

4 agencies  
SPORT

(X 1,000 Pounds)

SPECIES	1985	1986	1987	1988	1989	1990	1991	1992	1993	1994	1995	1996	1997
chinook salmon	9539.863	9731.578	8003.968	4098.538	3378.054	2068.011	2314.737	1587.318	1414.179	1412.814	2148.767	2769.77	2404.061
coho salmon	2029.587	1200.923	1294.818	949.156	1284.431	850.744	445.745	759.773	844.33	771.257	501.043	913.751	959.226
pink salmon	2.4	0.1	6.5	0	2	0	0.1	0	0.2	0	0	0	0
lake trout	1362.438	1318.034	1432.163	1431.243	1640.494	1177.718	1673.36	999.45	1161.082	1061.26	1537.489	772.53	983.374
brook trout	7.9	8.881	2.744	6.929	3.861	9.051	5.401	15.78	3.006	8.214	2.385	0.732	0.669
brown trout	615.398	711.919	646.67	420.281	403.478	344.529	436.74	307.487	424.134	507.558	377.275	365.738	466.706
rainbow trout	537.695	499.1	772.687	795.228	965.326	754.081	984.262	1103.273	1152.325	1099.182	1024.154	981.283	1029.745
walleye	128.296	146.605	104.245	161.639	111.112	106.079	142.026	87.844	134.763	231.004	245.327	271.382	130.524
yellow perch	1151.504	1538.677	2624.872	1967.633	1266.549	1315.172	1533.716	1426.183	1728.177	1033.422	1476.855	938.086	277.95
smb,musky,northern pike, and panfish	107.8	106.4	174.8	14.543	60.122	49.464	101.788	92.445	64.891	74.827	61.747	87.069	90.795
burbot	0	0	0	0	0.3	0.2	0.7	0	0.05	0	0	0	0
lake whitefish	278.6	167	48	25.9	29	23	25.8	11.9	7.4	10.8	10.184	25.176	31.61
menominee	25	42.7	29.6	5.1	9	5	2	0	7.1	0	0	0	0
sturgeon	0	0.437	0.882	0.836	0.73	0.686	1.186	1.784	1.414	1.071	1.883	1.371	1.552
suckers	0	0	0	0	0.2	0.3	12.7	0	3.4	0	0	0	0.3
alewives	0	0	0	0	0	0	0	0	0	0	0	0	0
bloaters	0	0	0	0	0	0	0	0	0	0	0	0	0
lake herring	0	0	0	0	0	0	0	0	0.1	0	0	0	0
rainbow smelt	1	112.3	74.7	46.2	0	0	0	0	0	0	0	0	0
TOTAL	15787.48	15584.65	15216.65	9923.226	9154.657	6704.035	7680.261	6393.237	6946.551	6211.409	7387.109	7126.88	6376.512

**SPORT HARVEST FOR ALL STATE AGENCIES IN 1000'S OF POUNDS  
THIS INCLUDES ILLINOIS, INDIANA, MICHIGAN AND WISCONSIN**

4 agencies  
SPORT

(X 1,000 Pounds)

SPECIES	1998	1999	2000	2001	2002	2003	2004	2005	2006	2007	2008	2009	2010
chinook salmon	2738.134	3520.723	4055.161	4618.725	6591.548	6306.87	8503.02	7820.87	8567.94	8015.651	5227.47	4909.8	4751.05
coho salmon	615.953	1191.972	1397.491	1003.436	1353.335	875.344	858.2	350.15	559.21	818.272	409.61	680.2	512.71
pink salmon	0	0	0	0.05	0.041	0	0	0	0	0	0	0	0
lake trout	1614.825	796.891	667.415	752.582	600.404	328.28	239.71	233.82	195.29	295.847	322.59	362.77	354.41
brook trout	0.667	0.648	0.633	1.163	0.411	0.5	0	0	0.051	0.1	0	0	0
brown trout	313.331	407.158	511.898	329.143	391.308	221.78	183.35	253.87	157.42	231.486	176.1	145.86	155.05
rainbow trout	1347.189	1152.596	922.039	1157.826	1166.406	702.55	450.2	674.42	556.49	649.547	414.89	589.81	512.56
walleye	120.096	124.055	145.355	139.6	165.697	152.87	142.845	83.1	108.36	236.599	224.42	300.4	178.5
yellow perch	270.54	492.937	375.741	415.375	399.814	503.87	492.97	563.92	708.86	478.981	424.29	408.51	376.47
smb,musky,northern pike, and panfish	65.145	48.045	41.128	44.768	56.215	92.71	65.56	55.95	67.58	92.58	61.08	35.7	42.05
burbot	0	0	1.362	0.5	0.3	0	0	0	17	0	0	0	0
lake whitefish	7.289	8.417	25.145	39.91	10.08	14	5.6	18.2	47.7	10	88.2	127.916	120.5
menominee	0	0	0	0	0	0	0	0	0	0	0	0	0
sturgeon	2.031	3.523	0	4.322	0	5.903	0	4.1	0	0	0	0	0
suckers	0	0	0	8.5	4.3	0	0	3.1	4.421	3.637	0	0	0
alewives	0	0	0	0	0	0	0	0	0	0	0	0	0
bloaters	0	0	0	0	0	0	0	0	0	0	0	0	0
lake herring	0	0	0	0	0	0	0	0	0	0	0	0	1.1
rainbow smelt	0	0	0	0	0.1	0	0	0	0	0	0	0	2
TOTAL	7095.2	7746.965	8143.368	8515.9	10739.96	9204.677	10941.46	10061.5	10990.32	10832.7	7348.65	7560.966	7006.4

**SPORT HARVEST FOR ALL STATE AGENCIES IN 1000'S OF POUNDS  
THIS INCLUDES ILLINOIS, INDIANA, MICHIGAN AND WISCONSIN**

4 agencies  
SPORT

(X 1,000 Pounds)

SPECIES	2011	2012	2013	2014	2015	2016	2017	2018	2019	2020*	2021	2022	2023
chinook salmon	4299	7510.306	3190.229	2689.32	1997.106	2239.533	1870.182	2314.474	2186.175	1712.02	2063.032	2631.733	3117.70
coho salmon	1222.319	796.5398	1038.121	485.37	416.387	916.55	1126.527	801.625	628.7068	431.964	645.3136	1199.777	778.7188
pink salmon	0	0	0	0	0.032	0	0.108	0.036	0.089	0.263	0.013	3.39676	0.319
lake trout	466.736	477.4982	556.306	683.24	824.79	811.536	778.924	1025.447	1137.206	1231.753	1212.678	679.6376	711.3322
brook trout	0	0	0	0	0	0	0	0	0	0	0.012	0.008	0.001
brown trout	76.75	142.423	146.65	194.43	145.793	173.265	156.542	97.912	105.5226	27.874	81.11282	67.10927	53.19492
rainbow trout	807.815	916.502	636.54	894.9	570.467	751.561	658.036	580.571	606.6	515.43	578.0908	448.8071	482.4867
walleye	281.4	349.622	291.03	285.55	339.587	246.214	239.42	429.2	304.739	267.075	469.05	455.072	609.489
yellow perch	291.486	184.629	270.35	157.84	148.126	107.57	211.076	169.521	231.5704	224.73	300.3395	159.4073	189.5988
smb, musky, northern pike, and panfish	69.085	64.143	75.61	45.29	103.799	137.586	79.511	89.704	89.574	55.39	104.6634	86.06331	94.54632
burbot	0	0	0	0	0	0	0	0	0	0	0	0	0.003
lake whitefish	267.6	88.507	170.321	169.11	230.268	210.411	240.94	299.542	157.596	237.025	144.721	129.624	32.11524
menominee	0	0	0	0	0.101	0.05	0	0.143	0.33	0.426	0.122	0.014	0.007
sturgeon	0	0	0	0	0	0	0	0	0	0	0	0	0
suckers	0	0	3.89	0	0	0	0	0	0	0	0	0	0.094
alewives	0	0	0	0	0	0	0	0	0	0	0	0	0
bloaters	0	0	0	0	0	0	0	0	0	0	0.09	0	0
lake herring	2	0	12.227	4.35	15.077	29.585	44.745	39.609	35.404	20.002	49.949	20.707	22.541
rainbow smelt	4	0	0	0	0	0	0	0	0	0	0	0	0.002
TOTAL	7788.191	10530.17	6391.274	5609.4	4791.533	5623.861	5406.011	5847.784	5483.512	4723.952	5649.187	5881.356	6092.149

**SPORT HARVEST FOR ALL STATE AGENCIES IN 1000'S OF POUNDS  
THIS INCLUDES ILLINOIS, INDIANA, MICHIGAN AND WISCONSIN**

4 agencies

SPORT

(X 1,000 Pounds)

SPECIES	2024	2025
chinook salmon	3203.72	3536.15
coho salmon	1796.49	942.91
pink salmon	4.31	0.12
lake trout	486.95	525.58
brook trout	0.00	0.00
brown trout	63.72	86.86
rainbow trout	596.66	523.61
walleye	272.48	277.70
yellow perch	256.54	214.86
smb,musky,northern pike, and panfish	39.61	39.08
burbot	0.03	0.28
lake whitefish	22.41	73.31
menominee	0.00	0.01
sturgeon	0.00	0.00
suckers	0.01	0.17
alewives	0.00	0.00
bloaters	0.00	0.00
lake herring	38.49	9.75
rainbow smelt	0.00	0.01
TOTAL	6781.42	6230.39

**SPORT HARVEST FOR ALL STATE AGENCIES IN 1000'S OF POUNDS  
THIS INCLUDES ILLINOIS, INDIANA, MICHIGAN AND WISCONSIN**